



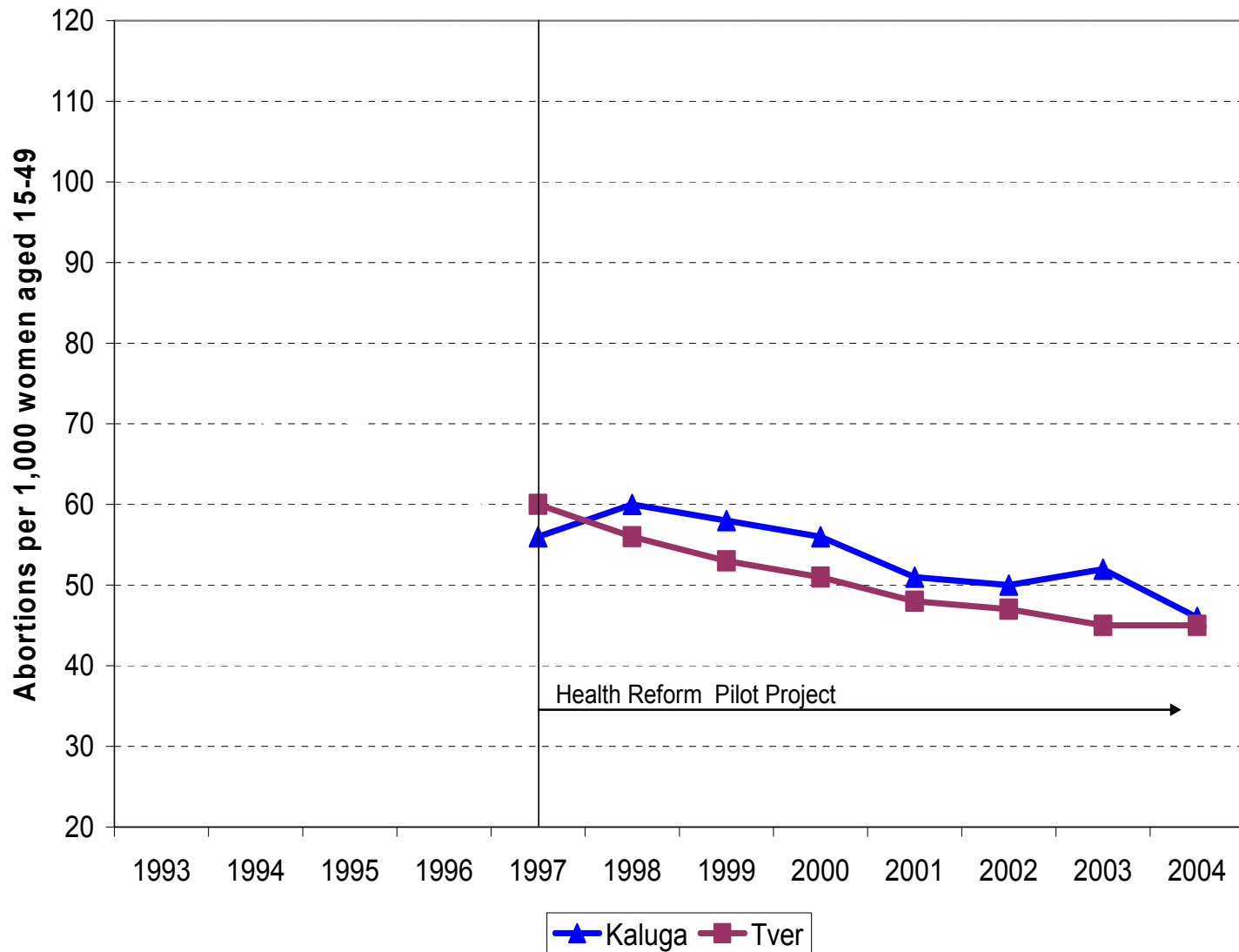
International Initiative for Impact Evaluation

Influential Impact Evaluations: Why, What, When and How

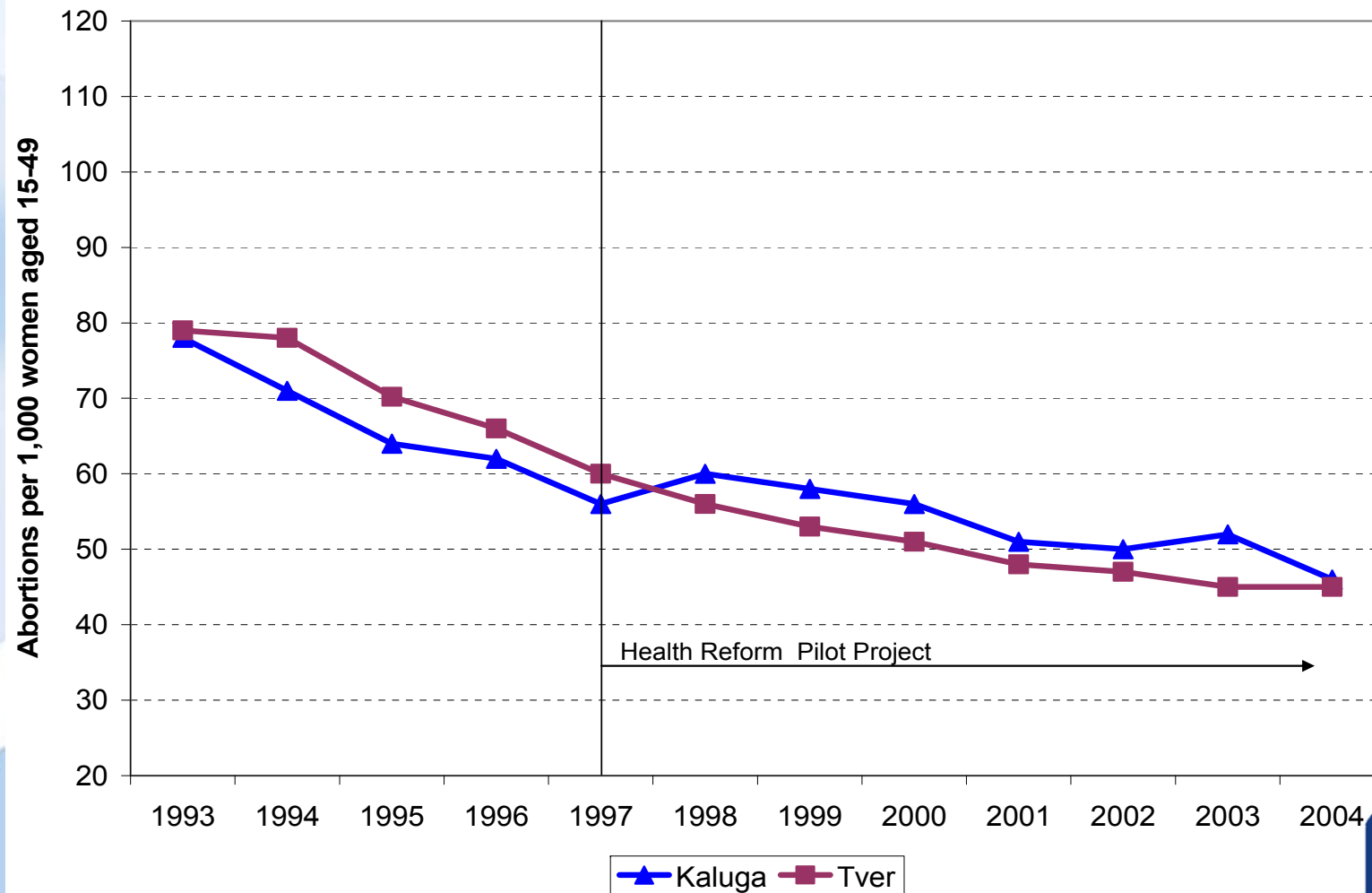
Emmanuel Jimenez
Executive Director, 3ie

Policy Forum on Impact Evaluation
Manila, Philippines
December 16, 2015

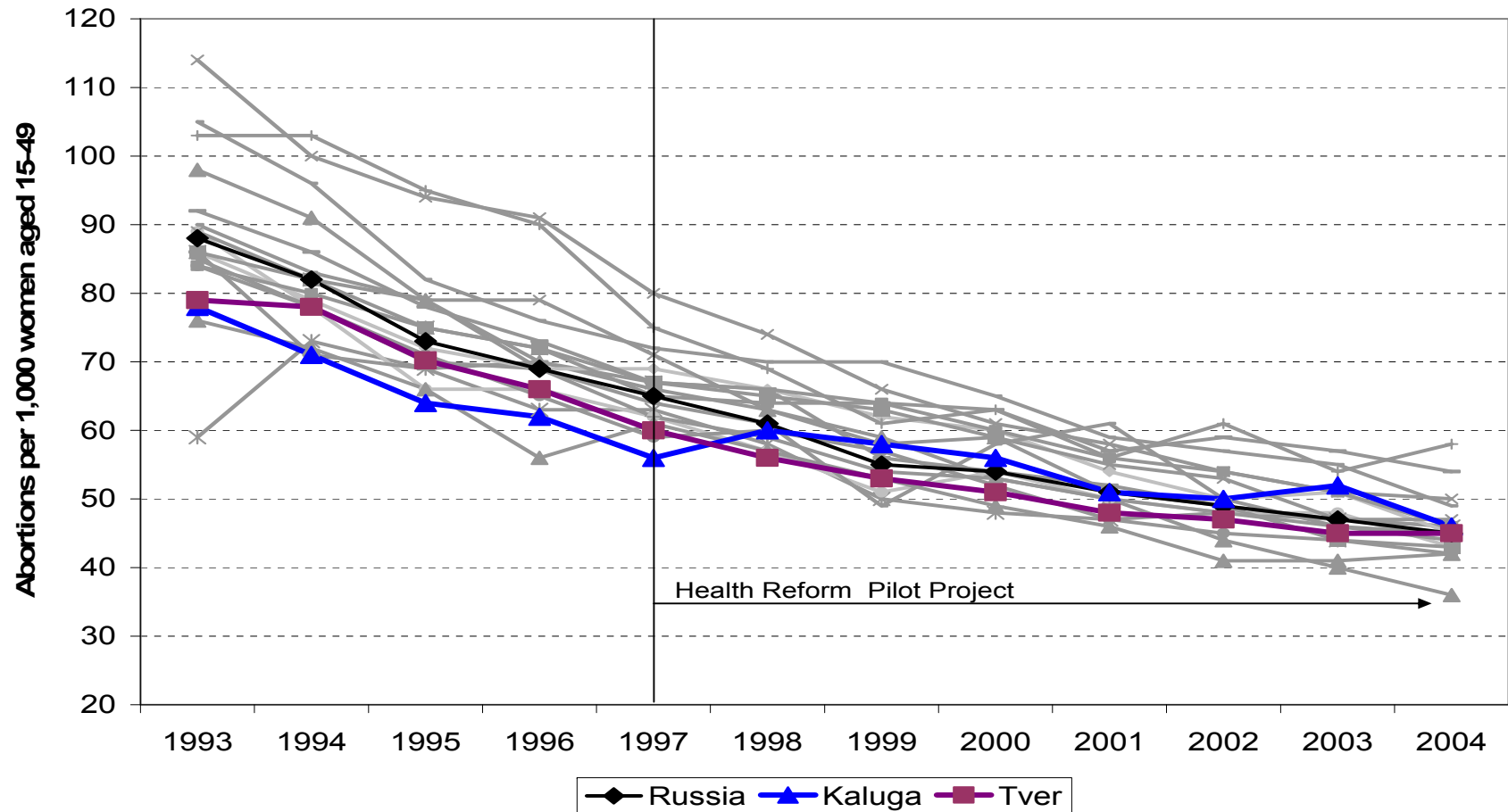
Why impact evaluations (IEs)? Evaluating outcomes of World Bank (WB) financed health reform pilot project in Russia



But outcomes were improving even before the project....



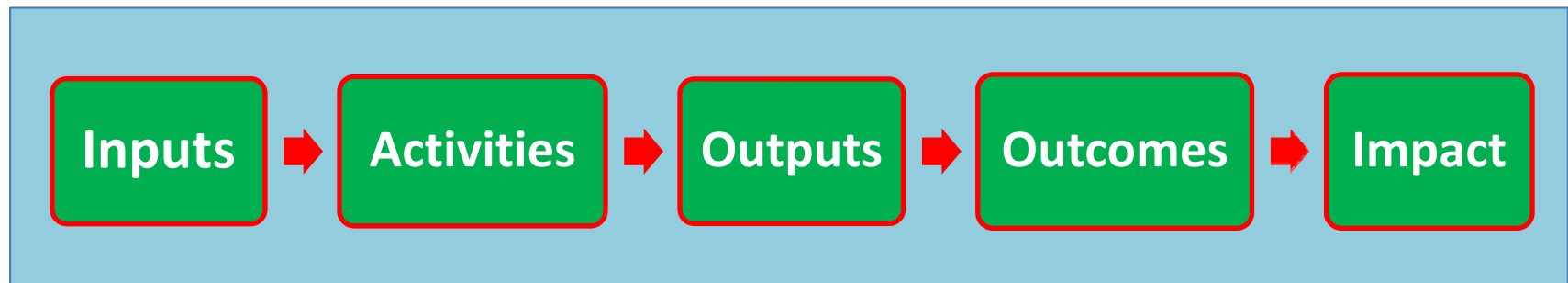
...And they were improving in all the other regions in Russia



Impact evaluation “means the study of changes in outcomes that are attributable to an intervention.”

What is the counterfactual? *What would have happened without the intervention or program?*

Outside factors



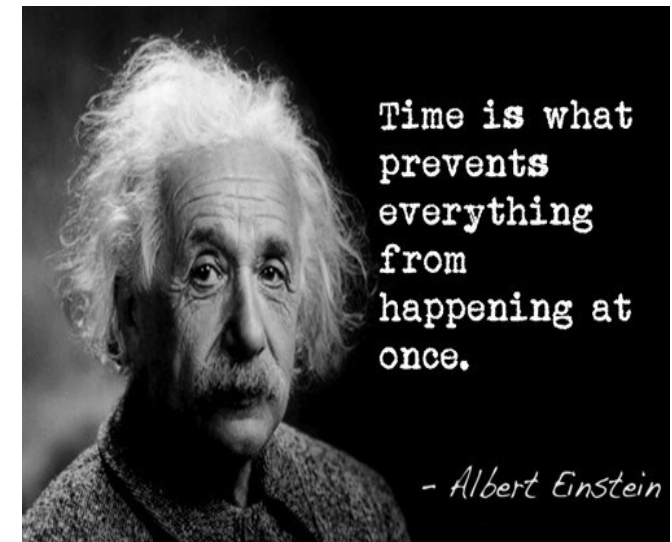
Establish the counterfactual: why and how?

- **Other issues: Selection**
 - selection by participants
 - selection due to program placement



Source: www.gettyimages.com

Issue: cannot observe beneficiary without the program



Time is what prevents everything from happening at once.

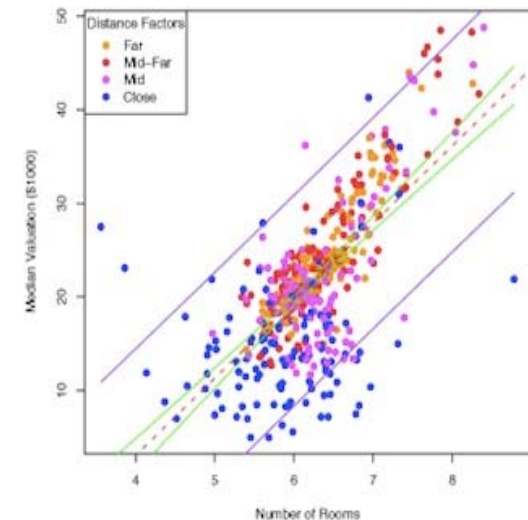
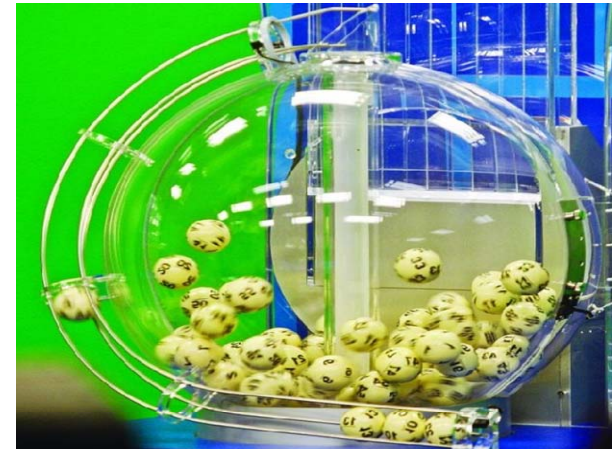
- Albert Einstein



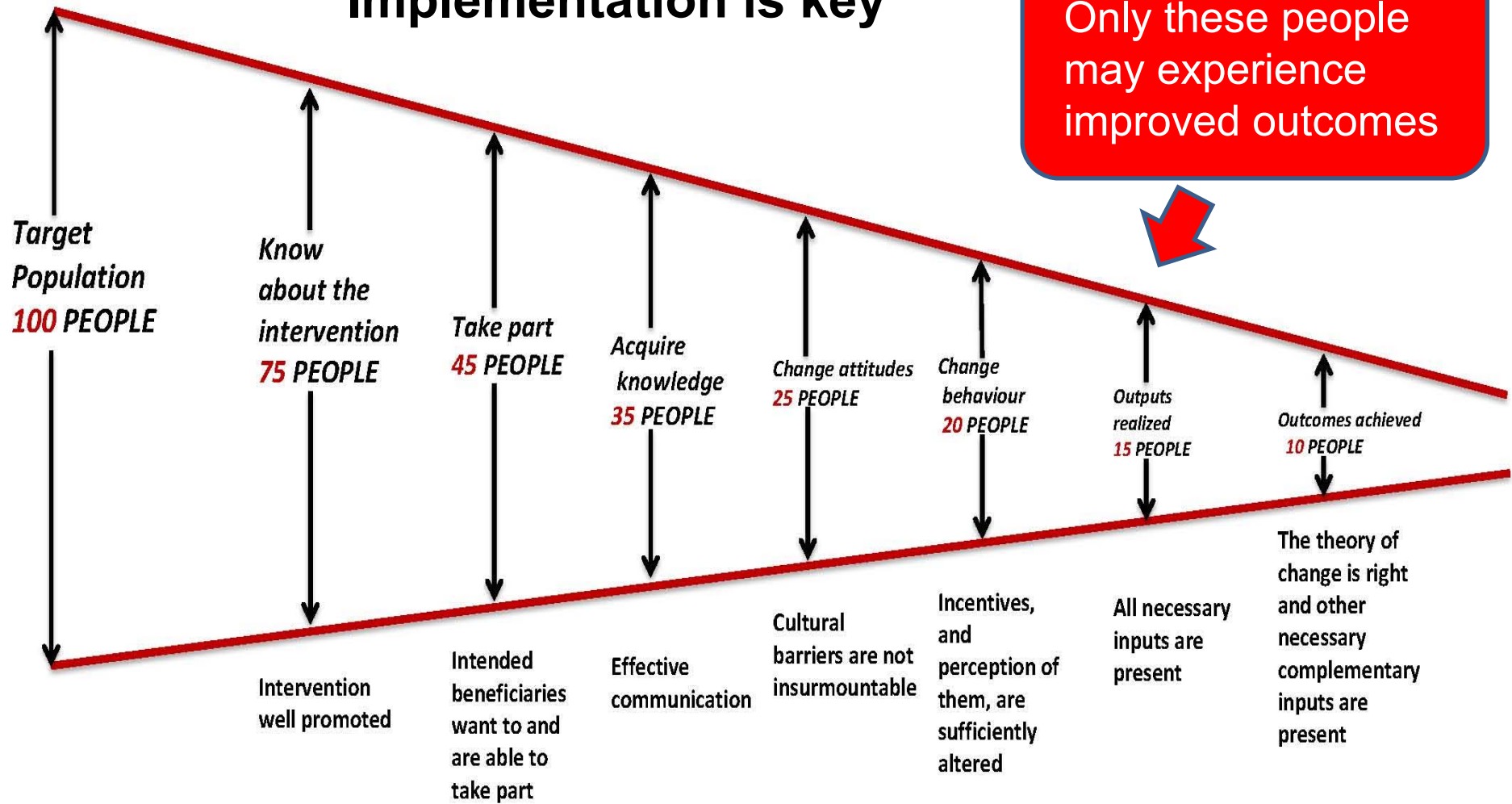
Establish the counterfactual: why and how?

Solution: Find a 'proxy' for the counterfactual using IE

- Experimental methods (randomized control trials or RCTs) use a control group
- Quasi-experimental methods use a comparison group that is found by:
 - matching,
 - differences-in-differences,
 - regression discontinuity,
 - instrumental variables and other econometric techniques



Implementation is key

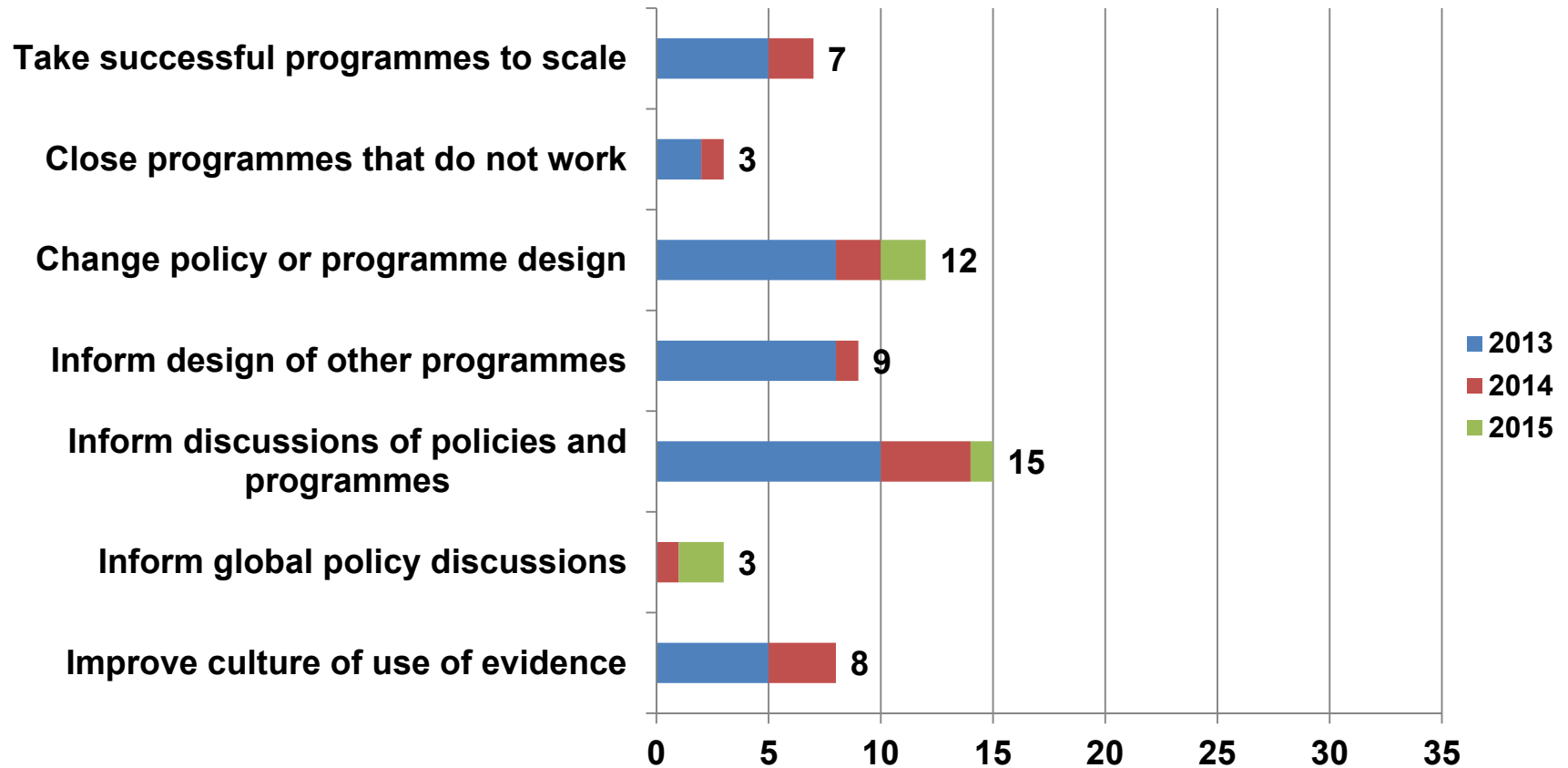


Only these people may experience improved outcomes



Funnel of Attrition

Do IEs influence program decisions and policies?: Indicators from 3ie-funded studies



Data is obtained from the PIP / SEEP and progress reports. In some cases, 3ie will initiate a call with grantees to understand policy change.



Examples of IEs that have had great impact

A youth wage subsidy experiment for South Africa (2014)



Improving Gujarat's industrial pollution inspection standards (2012)



The Promise of Preschool in Africa: A Randomized Impact Evaluation of Early Childhood Development in Rural Mozambique (2012)



What led to successful take up of evidence?

- **Quality:** Credible research
- **Leadership:** requires buy-in from key champions
- **Engagement:**
 - Early and sustained interaction between researchers and policy makers
 - Some capacity to demand good IE in implementing agencies
 - Results communicated well
- **Timeliness:** Right place at right time. Results when decision makers need, not when researchers publish



Countries that have “institutionalized” Impact Evaluation

- Make IEs part of a broader evaluation system
 - National evaluation frameworks promote accountability and learning in Mexico and South Africa to stimulate culture shift
 - frameworks with buy in from gov’t and legislature
 - supported by well staffed central secretariats (CONEVAL and DPME)
 - Secretariats mobilize all of government to set criteria for prioritizing IE, such as
 - new and innovative programs
 - existing programs that need redesign
 - longstanding and programs never before evaluated



planning, monitoring
and evaluation

Department:
Planning, Monitoring and Evaluation
REPUBLIC OF SOUTH AFRICA



Institutionalizing Impact Evaluation

- Make IEs part of a broader evaluation system
- Assure independence and quality control through
 - credible review mechanism with expert involvement
 - open public access to evaluation results



Institutionalizing Impact Evaluation

- Make IEs part of a broader evaluation system
- Assure independence and quality control
- Engage, engage, engage
 - dissemination needs to be planned from the start
 - develop capacity within implementing agencies
 - need bridge builders between technicians and communicators



In sum....

- Rigorous impact evaluations are needed to be sure that changes in outcomes are attributable to interventions.
- While these are more challenging than other types of evaluations, they are being done in many developing countries.
- Institutionalizing them requires a change in culture that needs:
 - Strong leadership in a broader evaluation system
 - An open and credible system of quality assurance
 - Constant engagement between evaluators and policy makers and implementers.

3ie Can Help

- An international grant-making non profit that funds the production of rigorous evidence to improve the effectiveness of development policies and programs:
 - providing grants to produce IEs
 - synthesizing evidence
 - supporting IEs through advice, capacity building and strengthening enabling environment
- Main office in Delhi with offices in Washington, London
- Established by donor consortium 6 years ago



Thank you



www.3ieimpact.org

 [@3ieNews](https://twitter.com/3ieNews)

 [International-Initiative-for-Impact-Evaluation-3ie](https://www.facebook.com/International-Initiative-for-Impact-Evaluation-3ie)

 [/3ievideos](https://www.youtube.com/channel/UC3ievideos)

 [international-initiative-for-impact-evaluation](https://www.linkedin.com/company/international-initiative-for-impact-evaluation)

New Delhi London Washington, DC